



**SOLIDSVAC<sup>®</sup>**

**SOLIDS PUMPiNG SYSTEMS**

**2024**  
**SOLIDSVAC**  
**CATALOGUE**



U1/ 5-7 Boeing Place - Caboolture - QLD 4510 - Australia

+61 456 000 665 / [info@solidsvac.com](mailto:info@solidsvac.com) / [www.solidsvac.com](http://www.solidsvac.com)



# *PUMPS*

# SOLIDSVAC<sup>®</sup>

**SOLIDS PUMPiNG SYSTEMS**

## SV40-AIR FOX

### Vacuum Loading Solids Pump

- Heavy Duty
- Highly Mobile
- Robust 316 Stainless Steel Construction
- 100% Pneumatic



U1/ 5-7 Boeing Place - Caboolture - QLD 4510 - Australia

+61 456 000 665 / [info@solidsvac.com](mailto:info@solidsvac.com) / [www.solidsvac.com](http://www.solidsvac.com)

# SV40-AIR FOX

## Vacuum Loading Solids Pump

The SV40-AF is a true 50mm (2") vacuum loading solids pump capable of transferring up to 15,000+ LP/H of heavy solids laden fluids. The super-efficient 316 spherical tank and valve combination ensure the widest range of materials can be pumped. Certified IECEx Zone 0, this is the smartest, toughest and most economical solids pump in the market today.

100% air powered, the all new compact, fully automatic, robust and fully mobile SV40-AF, generates 20"Hg+ of vacuum and can be used in a wide range of applications including drilling, mining and industrial.

TECHNICAL DATA	METRIC	US IMPERIAL
Height	1100 mm	43"
Width	650 mm	25.5"
Length	1100 mm	43"
Weight	100 kg	220 lb
Air inlet	25 mm	1" BSP
Suction inlet	50 mm	2"
Discharge outlet	50mm	2"
Operating pressure	7 bar (max) @ 690 kPa	100 psi (max)
Air consumption options	2.2 m <sup>3</sup> /Min Jetpack	80 cfm Jetpack
Delivery	300+ m	1000+ ft
Displacement cycle	40 ltr	10.5 gal
Suction lift	7m @ 80 cfm	22' 9" @ 80 cfm
Maximum solids	38 mm	1 1/2"
dBA Level	<84dba (1 Mtr)	<84dba (1 Mtr)

- Vessel and valves manufactured in 316 stainless steel
- Individually adjustable load and discharge cycles

### GENERAL USAGE

- Mining
- Drilling
- Industrial
- Agricultural
- Municipal

### APPLICATIONS INCLUDE

- Drilling mud waste
- Corrosive slurries
- Noxious waste
- Mine tailings
- Raw effluent

### OPTIONAL ACCESSORIES

- Suction wand
- Suction hose
- Discharge hose
- Duck bill & Vacuum head
- Large capacity strainer
- Dropbox
- Delivery carousel

# SOLIDSVAC<sup>®</sup>

**SOLIDS PUMPING SYSTEMS**

## **SV50-Rig Vac Vacuum Loading Solids Pump**

- Heavy Duty
- Highly Mobile
- Robust 316 Stainless Steel Construction
- 100% Pneumatic



U1/ 5-7 Boeing Place - Caboolture - QLD 4510 - Australia

+61 456 000 665 / [info@solidsvac.com](mailto:info@solidsvac.com) / [www.solidsvac.com](http://www.solidsvac.com)

# SV50-RIG VAC

## Vacuum Loading Solids Pump

The purpose built, SV50-Rig Vac is a super compact, highly mobile, IECEx Zone 0 certified vacuum unit designed specifically for maintaining a safe and clean rig floor. Versatile enough for the shaker and mud pits working environment, the SV50 Rig Vac is supplied complete with Vac-Head floor attachment.

100% air powered, the all new compact, fully automatic, robust and fully mobile SV50-RV, generates 20"Hg+ of vacuum and can be used in a wide range of applications including mining and industrial.

TECHNICAL DATA	METRIC	US IMPERIAL
Height	1100 mm	43"
Width	650 mm	25.5"
Length	1100 mm	43"
Weight	100 kg	220 lb
Air inlet	25 mm	1" BSP
Suction inlet	50 mm	2"
Discharge outlet	50 mm or 75 mm	2" or 3"
Suction lift	7.9m @ 100 cfm	26' 2" @ 100 cfm
Air consumption options	2.8 m <sup>3</sup> /Min Jetpack	100 cfm Jetpack
Delivery	400+ m	1312+ ft
Displacement cycle	50 ltr	13 gal
Operating pressure	7 bar (max) @ 690 kPa	100 psi (max)
Maximum solids	38 mm	1 1/2"
dBA Level	<84dba (1 Mtr)	<84dba (1 Mtr)

- Vessel and valves manufactured in 316 stainless steel
- Individually adjustable load and discharge cycles

### GENERAL USAGE

- Mining
- Drilling
- Industrial
- Agricultural
- Municipal

### APPLICATIONS INCLUDE

- Drilling mud waste
- Corrosive slurries
- Noxious waste
- Mine tailings
- Raw effluent

### OPTIONAL ACCESSORIES

- Suction wand
- Suction hose
- Discharge hose
- Duck bill & Vacuum head
- Large capacity strainer
- Dropbox
- Delivery carousel

# **SOLIDSVAC<sup>®</sup>**

**SOLIDS PUMPING SYSTEMS**

## **SV70-SPDK**

### **Vacuum Loading Solids Pump**

- Extra Heavy Duty
- Air Operated-Vacuum Loading
- High Solids Content Transfer



U1/ 5-7 Boeing Place - Caboolture - QLD 4510 - Australia

+61 456 000 665 / [info@solidsvac.com](mailto:info@solidsvac.com) / [www.solidsvac.com](http://www.solidsvac.com)

# SV70-SPDK

## Vacuum Loading Solids Pump

The Solidsvac SV70-SPDK is designed to reliably handle any flowable sludge and slurry and is ideally suited where submersible, centrifugal and diaphragm pumps are not a viable option.

Designed to offer the operator a one man vacuum recovery pressure discharge unit capable of recovering and transferring almost any flowable material, the extra heavy duty twin 75mm (3") suction and discharge knife gate valves deliver outstanding performance in the capture and transfer of heavy flowable sludges with high solids content.

100% air powered, the all new compact, fully automatic, robust and fully mobile SV70-SPDK, generates 22.5"Hg+ of vacuum and can be used in a wide range of applications including mining and industrial.

TECHNICAL DATA	METRIC	US IMPERIAL
Height	1150 mm	45"
Width	650 mm	25.5"
Length	1240 mm	48.5"
Weight	130 kg	287 lb
Air inlet	13 mm	1/2" BSP
Suction inlet	75 mm	3"
Discharge outlet	75 mm or 100 mm	3" or 4"
Suction lift	7.9m @ 100 cfm 9.2 @ 180 cfm 11.5m @ 230 cfm	26' 2" @ 100 cfm 30' @ 180 cfm 37' 7" @ 230 cfm
Air consumption options	2.8 m <sup>3</sup> /Min Jetpack 5.0 m <sup>3</sup> /Min Jetpack 6.5 m <sup>3</sup> /Min Jetpack	100 cfm Jetpack 180 cfm Jetpack 230 cfm Jetpack
Delivery	400+ m	1312+ ft
Displacement cycle	65 ltr	17 gal
Operating pressure	7 bar (max) @ 690 kPa 4.5 bar (min) @ 448 kPa	100 psi (max) 65 psi (min)
Maximum solids	50 mm	2"
Measured water throughput	400 lpm	106 gpm

- Vessel and valves manufactured in 316 stainless steel
- Individually adjustable load and discharge cycles

### GENERAL USAGE

- Mining
- Drilling
- Industrial
- Agricultural
- Municipal

### APPLICATIONS INCLUDE

- Drilling mud waste
- Corrosive slurries
- Noxious waste
- Mine tailings
- Raw effluent

### OPTIONAL ACCESSORIES

- Suction wand
- Suction hose
- Discharge hose
- Duck bill & Vacuum head
- Large capacity strainer
- Dropbox
- Delivery carousel



**SOLIDSVAC** / SOLIDS PUMPING SYSTEMS

U1/ 5-7 Boeing Place - Caboolture - QLD 4510 - Australia

+61 456 000 665 / info@solidsvac.com / www.solidsvac.com



# SOLIDSVAC<sup>®</sup>

*SOLIDS PUMPING SYSTEMS*

## SV100-SPDK

### Vacuum Loading Solids Pump

- Extra Heavy Duty
- Air Operated-Vacuum Loading
- High Solids Content Transfer



U1/ 5-7 Boeing Place - Caboolture - QLD 4510 - Australia

+61 456 000 665 / [info@solidsvac.com](mailto:info@solidsvac.com) / [www.solidsvac.com](http://www.solidsvac.com)

# SV100-SPDK

## Vacuum Loading Solids Pump

The Solidsvac SV100-SPDK is designed to reliably handle any flowable sludge and slurry and is ideally suited where submersible, centrifugal and diaphragm pumps are not a viable option.

Designed to offer the operator a one man vacuum recovery pressure discharge unit capable of recovering and transferring almost any flowable material, the extra heavy duty twin 100mm (4") suction and discharge knife gate valves deliver outstanding performance in the capture and transfer of heavy flowable sludges with high solids content.

100% air powered, the all new compact, fully automatic, robust and fully mobile SV100-SPDK, generates 22.5"Hg+ of vacuum and can be used in a wide range of applications including mining and industrial.

TECHNICAL DATA	METRIC	US IMPERIAL
Height	1150 mm	45"
Width	700 mm	27.5"
Length	1300 mm	51"
Weight	200 kg	440 lb
Air inlet	25 mm	1" BSP
Suction inlet	100 mm	4"
Discharge outlet	100 mm	4"
Suction lift	7.9 m @ 100 cfm 9.2 @ 180 cfm 11.5 @ 230 cfm	26' 2" @ 100 cfm 30' @ 180 cfm 37' 7" @ 230 cfm
Air consumption options	2.8 m <sup>3</sup> /Min Jetpack 5.0 m <sup>3</sup> /Min Jetpack 6.5 m <sup>3</sup> /Min Jetpack	100 cfm Jetpack 180 cfm Jetpack 230 cfm Jetpack
Delivery	400+ m	1312+ ft
Displacement cycle	90 ltr	23 gal
Operating pressure	7 bar (max) @ 690 kPa 4.5 bar (min) @ 448 kPa	100 psi (max) 65 psi (min)
Maximum solids	75 mm	3"
Measured water throughput	500 lpm	132 gpm

- Vessel and valves manufactured in 316 stainless steel
- Individually adjustable load and discharge cycles

### GENERAL USAGE

- Mining
- Drilling
- Industrial
- Agricultural
- Municipal

### APPLICATIONS INCLUDE

- Drilling mud waste
- Corrosive slurries
- Noxious waste
- Mine tailings
- Raw effluent

### OPTIONAL ACCESSORIES

- Suction wand
- Suction hose
- Discharge hose
- Duck bill & Vacuum head
- Large capacity strainer
- Dropbox
- Delivery carousel

# SOLIDSVAC<sup>®</sup>

*SOLIDS PUMPING SYSTEMS*

## SV200-SPDK

### Vacuum Loading Solids Pump

- Intrinsically Safe
- 100% Compressed Air Operation
- High Solids Content Transfer



# SV200-SPDK

## Vacuum Loading Solids Pump

The Solidsvac SV200-SPDK is a truly versatile vacuum loading solids pump. Manufactured in 316 stainless steel, it is lightweight and mobile yet able to capture and transfer viscous high SG slurries whilst remaining a one man or fully automatic operation.

The low air consumption, high vacuum venturies engineered by Solidsvac Pumps ensure high educted airflows which means high educted airflow providing outstanding pulling power. The SV200-SPDK also features as an optional extra, the air-assist gravity inlet which can accommodate high volume direct feed for rapid hopper transfer of materials ranging from drill cuttings to sugar. The Solidsvac SV200-SPDK is the true BRUTE when it comes to versatile solids pumps.

TECHNICAL DATA	METRIC	US IMPERIAL
Height	1350 mm	53"
Width	900 mm	35.5"
Length	1560 mm	61"
Weight	315 kg	617 lb
Air inlet	40 mm	1-1/2" BSP
Suction inlet	100 mm	4"
Discharge outlet	100 mm	4"
Suction lift	9.2 m @ 180 cfm 11.5 @ 230 cfm	30' @ 180 cfm 37' 7" @ 230 cfm
Air consumption options	5.0 m <sup>3</sup> /Min Jetpack 6.5 m <sup>3</sup> /Min Jetpack	180 cfm Jetpack 230 cfm Jetpack
Delivery	500+ m	1640+ ft
Displacement cycle	190 ltr	50 gal
Operating pressure	7 bar (Required) @ 690 kPa	100 psi (Required)
Vacuum Options	73 to 86.5 kPa	21.5" to 25.5" Hg
Maximum solids	65 mm	2-1/2"
Measured water throughput	620 lpm	163 gpm

- Vessel and valves manufactured in 316 stainless steel
- Individually adjustable load and discharge cycles
- As supplied in crash frame with fork access as standard
- Puncture proof tyres available as optional extra
- Suction Lifts indicated require 7 bar (100 psi) operating pressure

### GENERAL USAGE

- Mining
- Drilling
- Industrial
- Petrochemical
- Municipal

### APPLICATIONS INCLUDE

- Thickener desludge
- Heavy crude transfer
- Hazardous waste recovery
- Transfer of mine slurries
- Raw effluent pond desludging

### OPTIONAL ACCESSORIES

- Suction wand
- Suction hose
- Discharge hose
- Duck bill vacuum head
- Large capacity strainer
- Dropbox
- Delivery carousel



# SOLIDSVAC<sup>®</sup>

SOLIDS PUMPING SYSTEMS

## SV150-CVCD

### Continuous Vacuum Loading Solids Pump

- Intrinsically Safe
- 100% Compressed Air Operation
- High Solids Content Transfer



U1/ 5-7 Boeing Place - Caboolture - QLD 4510 - Australia

+61 456 000 665 / [info@solidsvac.com](mailto:info@solidsvac.com) / [www.solidsvac.com](http://www.solidsvac.com)

# SV150-CVCD

## Continuous Vacuum Loading Solids Pump

The Solidsvac SV150-CVCD is a truly versatile continuous vacuum loading solids pump, manufactured using 316 stainless steel vessels and valves as standard. The SV 150-CVCD can be supplied as fixed or mobile plant. This fully automatic unit can generate vacuum up to 24.5" Hg - 83 kPa and be utilised manned or unmanned to capture and transfer viscous high SG slurries. The SV150-CVCD can also be fitted with a Direct Feed Hopper (below image) ensuring a constant flow of material. When transferring drill cuttings, the SV150-CVCD with the Direct Feed Hopper, can operate as both Primary and Back Up removing the need for both Pit and backhoe.

### TECHNICAL DATA

	METRIC	US IMPERIAL
Height	1260 mm	47"
Width	980 mm	38.5"
Length	1500 mm	60"
Weight	600 kg	1322 lb
Air inlet	50 mm	2" BSP/NPT
Suction inlet	75 mm	3"
Discharge outlet	75 mm	3"
Suction lift	7.9m @ 100 cfm 9.2m @ 180 cfm 11.5m @ 230 cfm	26' 2" @ 100 cfm 30' @ 180 cfm 37' 7" @ 230 cfm
Air consumption options	2.8 m <sup>3</sup> /Min Jetpack & 2.8 m <sup>3</sup> /Min Discharge 5.0 m <sup>3</sup> /Min Jetpack & 2.8 m <sup>3</sup> /Min Discharge 6.5 m <sup>3</sup> /Min Jetpack & 2.8 m <sup>3</sup> /Min Discharge	100 cfm Jetpack & 100 cfm Discharge 180 cfm Jetpack & 100 cfm Discharge 230 cfm Jetpack & 100 cfm Discharge
Delivery	500+ m	1640+ ft
Displacement cycle	130 ltr	34 gal
Operating pressure	7 bar (Required) @ 690 kPa	100 psi (Required)
Unit Requirements	5.6 m <sup>3</sup> /Min or 7.8 m <sup>3</sup> /Min or 9.3 m <sup>3</sup> /Min	200 cfm or 280 cfm or 330 cfm
Maximum solids	55 mm	2.5"
Measured water throughput	800 lpm (130 cfm)	211 gpm (130 cfm)

### GENERAL USAGE

- Mining
- Drilling
- Industrial
- Petrochemical
- Municipal

### APPLICATIONS INCLUDE

- Drill cuttings transfer
- Thickener desludge
- Hazardous waste recovery
- Transfer of mine slurries
- Raw effluent pond desludging

### OPTIONAL ACCESSORIES

- Suction wand
- Suction hose
- Discharge hose
- Duck bill vacuum head
- Large capacity strainer
- Dropbox
- Delivery carousel

- No internal workings. Cannot be damaged dry running
- Adjustable load cycles times
- Supplied on skids with fork access and certified lifting points as standard
- Wheels with puncture proof tyres are available as an optional extra
- Suction Lifts indicated require 7 bar (100 psi) operating pressure

Direct Feed Hopper  
Shown Here



**SOLIDSVAC** / SOLIDS PUMPING SYSTEMS

U1/ 5-7 Boeing Place - Caboolture - QLD 4510 - Australia

+61 456 000 665 / info@solidsvac.com / www.solidsvac.com

# SOLIDSVAC<sup>®</sup>

SOLIDS PUMPING SYSTEMS

## SV440-CVCD

### Continuous Vacuum Loading Solids Pump

- Intrinsically Safe
- 100% Compressed Air Operation
- High Solids Content Transfer
- Up to 60m<sup>3</sup>/hr



U1/ 5-7 Boeing Place - Caboolture - QLD 4510 - Australia

+61 456 000 665 / [info@solidsvac.com](mailto:info@solidsvac.com) / [www.solidsvac.com](http://www.solidsvac.com)

# SV440-CVCD

## Continuous Vacuum Loading Solids Pump

The SV440-CVCD "Great White" is as the name suggests, the top of the range in constant flow solids pumps. Delivering 25"Hg + of vacuum enabling it to recover and transfer up to 60m<sup>3</sup>/hr of most flowable solids laden materials over 1000 metres. The SV440 can be fixed or mobile and features full 316 vessels and valves as standard. The SV440 is available in a range of air configurations to suit your application and is ideal for high volume tailings pond/lagoon desludging, tank cleaning and high flow, high lift applications in excess of 25 metres.

The SV440-CVCD is the "Great White" providing constant flow via its 100mm (4") inlet and outlet manifolds ensuring the maximum recovery and transfer rates are readily achievable.

### TECHNICAL DATA

	METRIC	US IMPERIAL
Height	1600 mm	63"
Width	1270 mm	50"
Length	2010 mm	79"
Weight	1000 kg	2204 lb
Air inlet	50 mm	2" BSP/NPT
Suction inlet	100 mm	4"
Discharge outlet	100 mm	4"
Suction lift	25m @ 380 cfm* 35m @ 600 cfm	57' @ 380 cfm 88' @ 600 cfm
Air consumption options	10.7 m <sup>3</sup> /Min Jetpack & 5.6 m <sup>3</sup> /Min Discharge 16.9 m <sup>3</sup> /Min Jetpack & 5.6 m <sup>3</sup> /Min Discharge	380 cfm Jetpack & 180 cfm Discharge 600 cfm Jetpack & 180 cfm Discharge
Delivery	500+ m	1640+ ft
Displacement cycle	420 ltr	34 gal
Operating pressure	7 bar (Required) @ 690 kPa	100 psi (Required)
Unit Requirements	15.8 m <sup>3</sup> /Min or 22.1 m <sup>3</sup> /Min	560 cfm or 780 cfm
Maximum solids	80 mm	3"
Measured water throughput	1000 lpm (380 cfm)	264 gpm (380 cfm)

### GENERAL USAGE

- Mining
- Drilling
- Industrial
- Petrochemical
- Municipal

### APPLICATIONS INCLUDE

- Drill cuttings transfer
- Thickener desludge
- Hazardous waste recovery
- Transfer of mine slurries
- Raw effluent pond desludging

### OPTIONAL ACCESSORIES

- Suction wand
- Suction hose
- Discharge hose
- Duck bill vacuum head
- Large capacity strainer
- Dropbox
- Delivery carousel

\*All suction lifts indicated are ambient air assisted

- No internal workings. Cannot be damaged dry running
- High volume throughput
- Supplied on skids with fork access and certified lifting points as standard
- Suction Lifts indicated require 7 bar (100 psi) operating pressure

**SOLIDSVAC** / SOLIDS PUMPING SYSTEMS

U1/ 5-7 Boeing Place - Caboolture - QLD 4510 - Australia

+61 456 000 665 / info@solidsvac.com / www.solidsvac.com





# ACCESSORIES

# SOLIDSVAC<sup>®</sup>

**SOLIDS PUMPING SYSTEMS**

## SV-VP Vac-Pack

The Vac-Pack is a 100% compressed air powered mobile unit designed to deliver a continuous 25" Hg of vacuum with high in-line airflows. When combined with vacuum rated skips or tanks, the Vac-Pack can provide operators an economical alternative to using vac-trucks in certain applications.

- Delivers Continuous High Vacuum
- Exceptionally Low Maintenance
- Compact and Highly Mobile
- Available in 230/380/600/900/1200 CFM
- Intrinsically safe

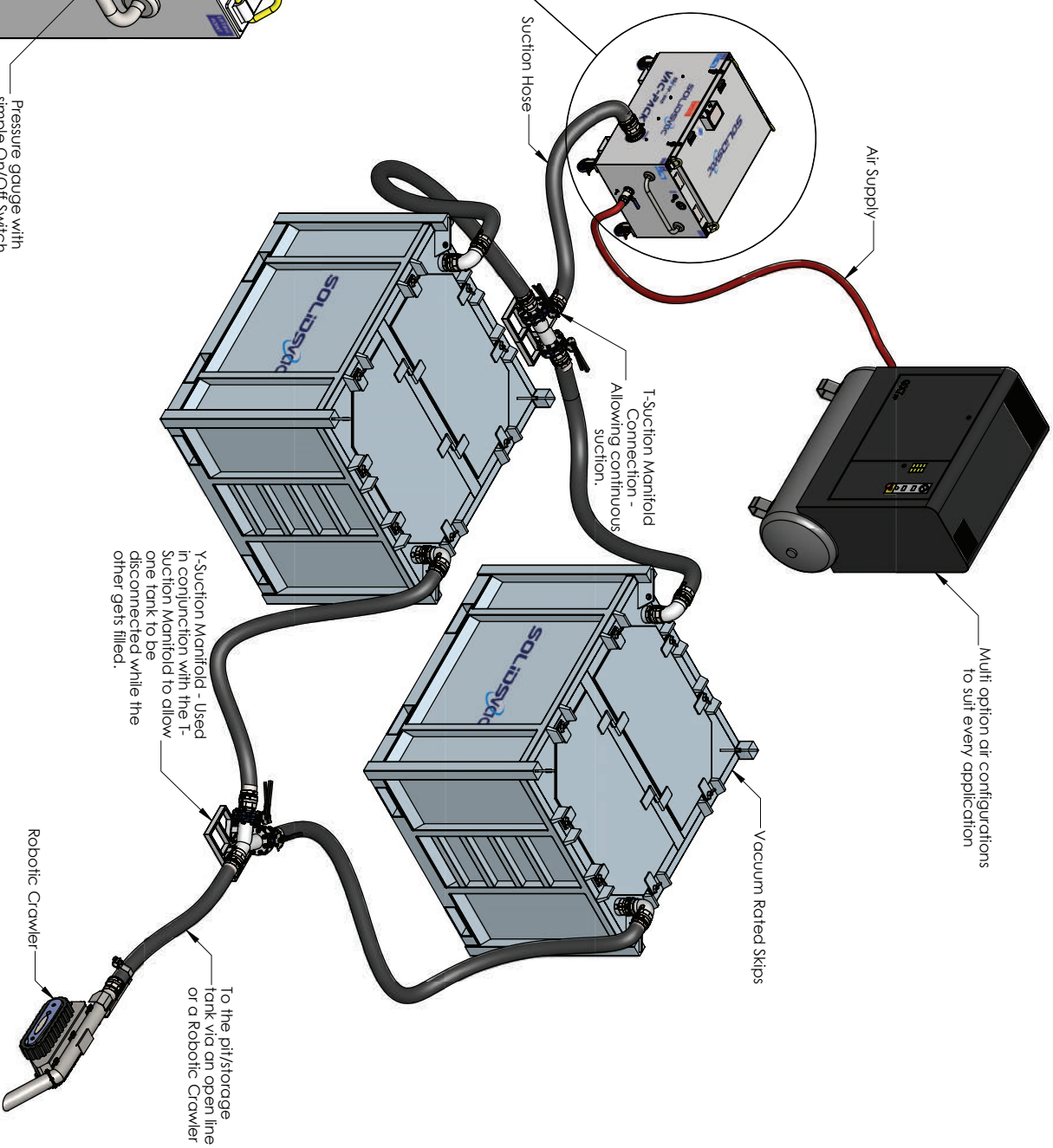
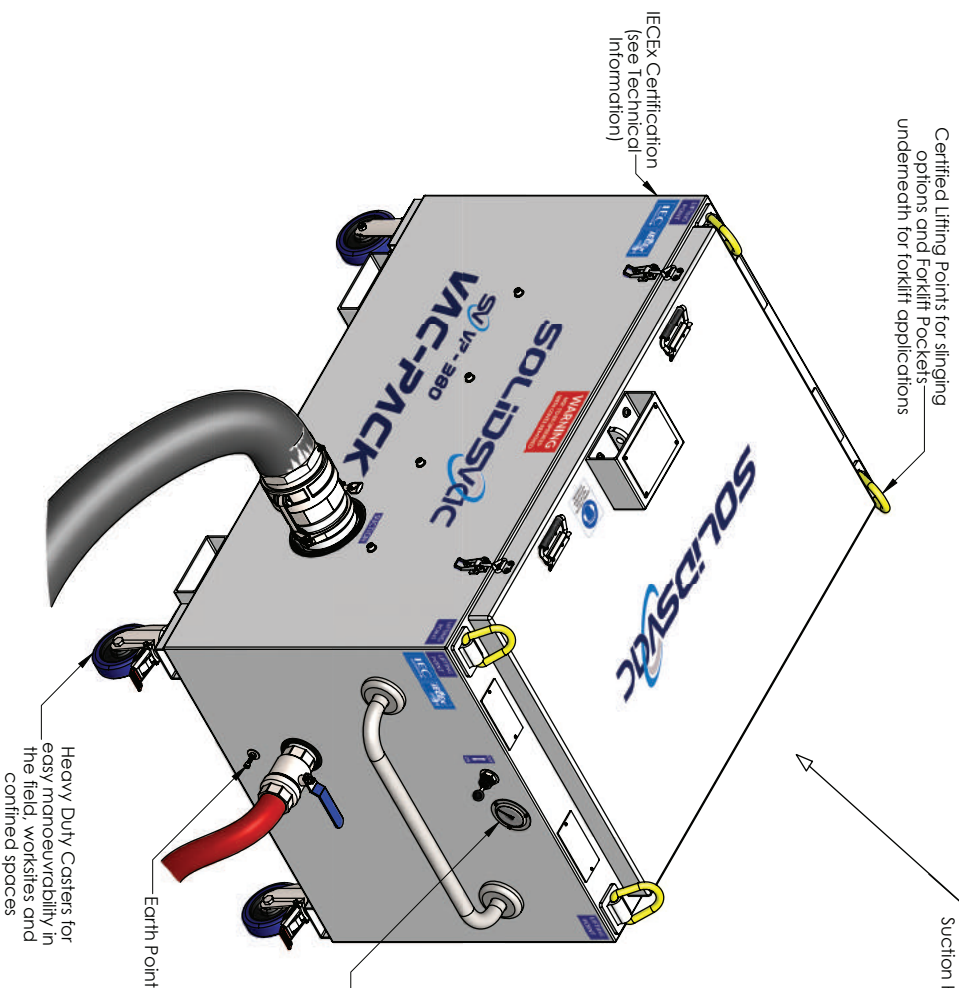


U1/ 5-7 Boeing Place - Caboolture - QLD 4510 - Australia

+61 456 000 665 / [info@solidsvac.com](mailto:info@solidsvac.com) / [www.solidsvac.com](http://www.solidsvac.com)

# SOLIDSVAC

## VAC-PACK



### TECHNICAL INFORMATION

	METRIC	US IMPERIAL
Length	1350mm	53"
Width	890mm	35"
Height	960mm	37.7"
Weight	280kg	617 lb
CFM Options	230/380/600/900/1200 CFM	
Vacuum	25" Hg	
DBA	85 (1m @ 230 CFM)	
Air Connection	2" (50mm) BSP/NPT	
Suction Inlet	4" (100mm) Camlock	
IECEX Certification	Zone 0 & Zone 1	

# SOLIDSVAC<sup>®</sup>

**SOLIDS PUMPING SYSTEMS**

## SV-800 CAROUSEL

The SV-800 Carousel allows users to control the discharge of materials into multiple points. The Drop Box design harnesses gravity, reducing labour intensity.

- Heavy Duty
- Simple Operation
- Low Maintenance
- Multi-Point Delivery



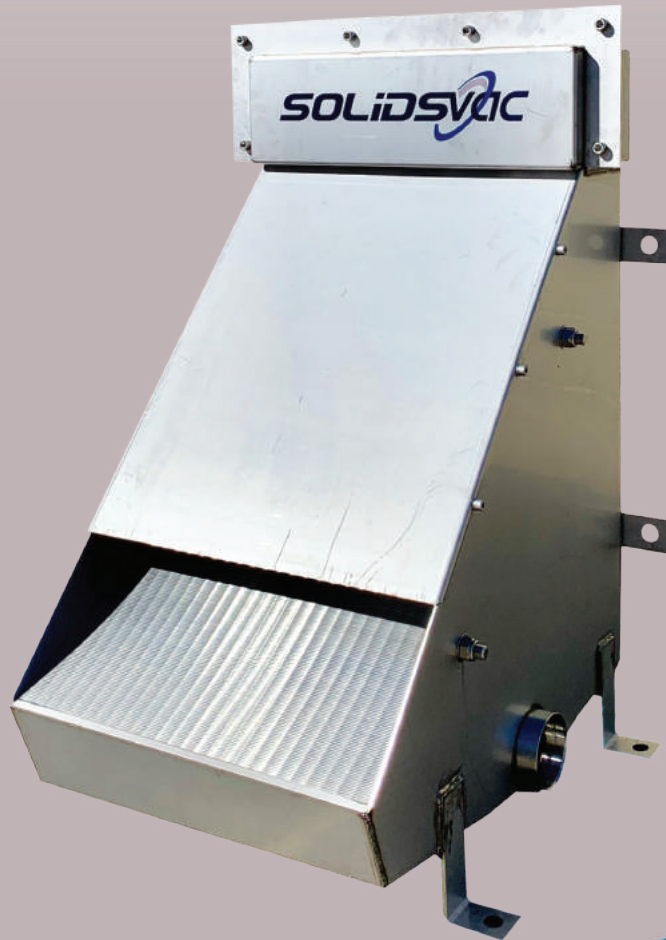
# SOLIDSVAC<sup>®</sup>

*SOLIDS PUMPING SYSTEMS*

## SV-DEWATERING BOX

The Solidsvac Dewatering Box can be installed over bin, skip or an underground conveyor. Solids laden slurries and fines can be pumped into the SV-DB and particles above 0.5mm separated. Solids are then delivered to the conveyor, bin or skip and clean fluid will be returned to the pumping system via the underflow outlet on the SV-DB.

- Dewater Slurry
- Fast & Efficient
- Rapid Install
- Robust
- 316ss

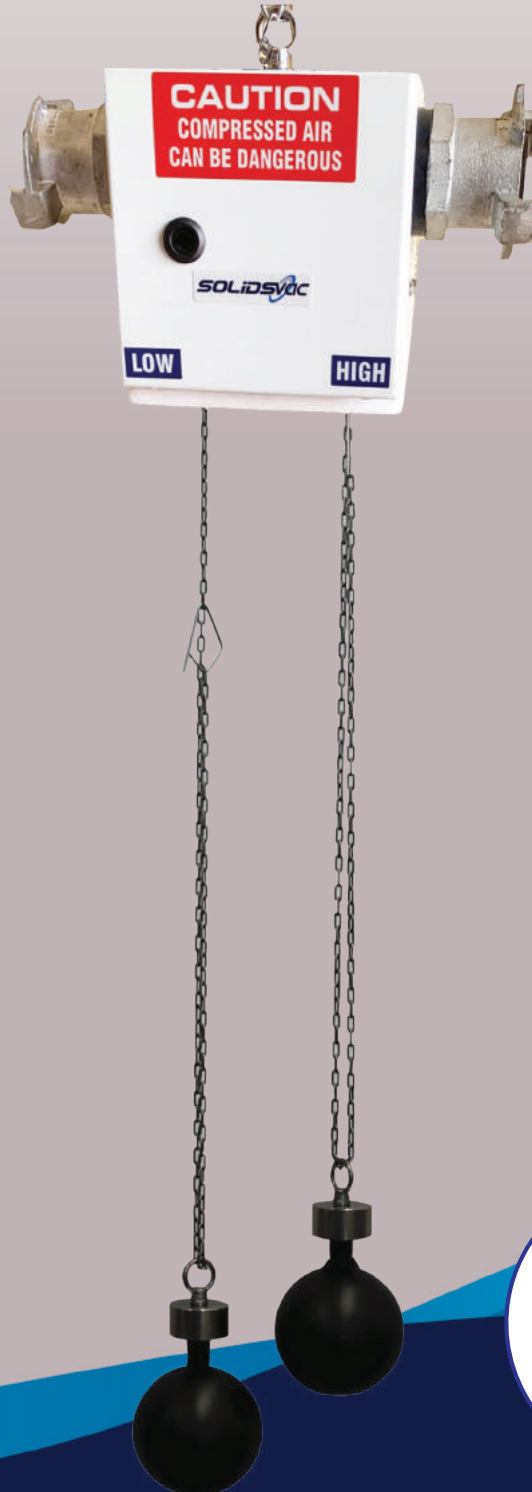


# SOLIDSVAC<sup>®</sup>

*SOLIDS PUMPING SYSTEMS*

## SV-FLOAT SWITCH

- Heavy Duty
- 100% Pneumatic
- Simple Operation
- Detect Liquid Levels
- Sump Or Tank Control



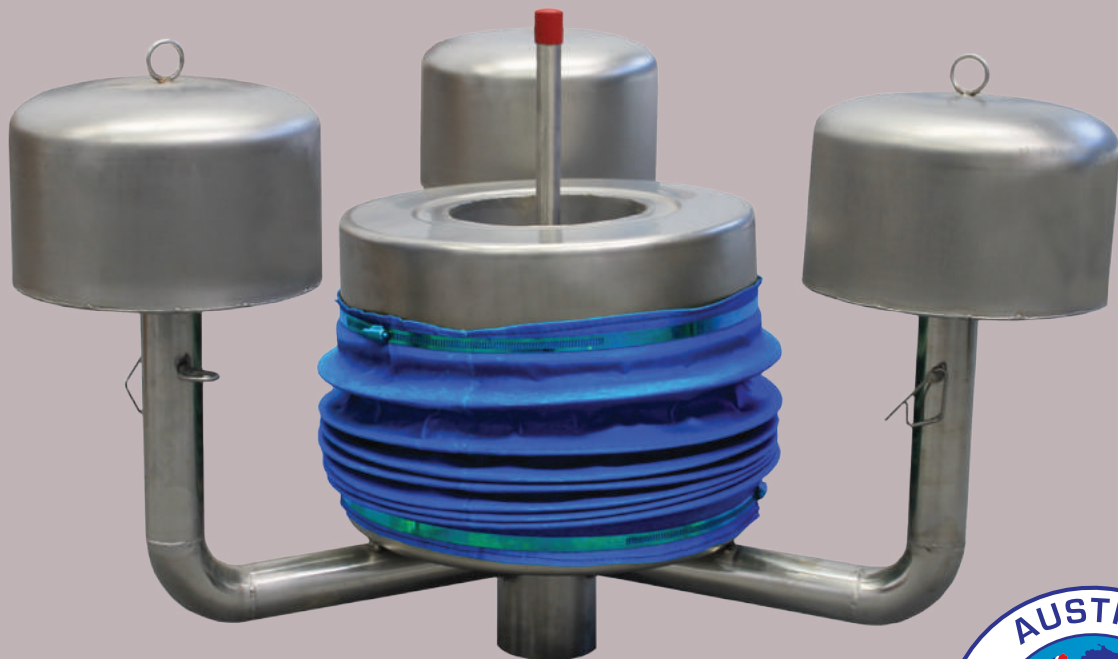
# SOLIDSVAC<sup>®</sup>

**SOLIDS PUMPING SYSTEMS**

## SV-SURFACE SKIMMER

The SV-Surface Skimmer allows for the capture of materials floating on the surface of any body of liquid. Capable of recovering both liquids and debris, this unit uses only the motive force of a pumps suction to operate.

- Variable Skimming Depth
- Simple Camlock Connection
- Compatible with 2" Air Pumps
- Stainless Steel Construction



# SOLIDSVAC<sup>®</sup>

**SOLIDS PUMPING SYSTEMS**

## SV-IN-LINE ANNULAR

The SV-ILA was designed to assist in the fluidizing of either dense or high Sg material being discharged from all Solidsvac Pumps. Solidsvac Pumps utilise a combination of both dense and lean phase pneumatic conveying. The SV-ILA can be installed at any point along the discharge line and with air supplied (100cfm @ 60psi) both discharge rates and distances can be increased considerably. Vertical discharges of material with an Sg of 2.5 to a height in excess of 45 metres have been achieved utilising the SV-ILA system.

- Manufactured in 316
- 3/4" BSP/NPT Air Connection
- Available in 3" and 4"



Note: As the SV-ILA adds air volume to the discharge line, the increased volume must be accommodated at the final discharge point. Often this can be achieved with the use of a Solidsvac Drop Box or similar. In the case of dry materials, the cyclone capacity must be taken into account.





# SOLIDSVAC®

SOLIDS PUMPING SYSTEMS

## SV-LS-15/25

### Pneumatic Pump Controller

- Save Air
- Lower Maintenance Costs
- Reduce Wear



# SV-LS-15/25

## Pneumatic Pump Controller

### BACKGROUND INFORMATION

After the recent successful release of the Solidsvac Strainer Trainer, a number of mining operations approached Solidsvac seeking the development of a pneumatic control unit that would both reduce pump wear and provide savings with regards to their overall compressed air consumption.

### ABOUT THE UNIT

The Solidsvac SVLS series level switches are compact, lightweight controllers that prevent air powered pumps from operating unnecessarily, in turn delivering reduced pump wear and significant air savings.

### FEATURES:

- Tamper proof enclosure
- No moving parts within sensor
- Can be installed at 45 degrees
- Will fit directly to pump
- Sensor can be located remotely (supplied with 5 metre sense line as standard)
- Manual override switch



# SV-LS-15/25

## Pneumatic Pump Controller

### CAPABILITIES

The level sensor will operate up to 5 metres from the controller and on an angle up to 45 degrees from the vertical and as such, can be readily deployed in many scavenge pump situations.

The LS series provide between 150 and 200ml of depth control and are readily integrated into the Solidsvac Strainer Trainer, further enhancing pump performance, whilst reducing wear and eliminating compressed air wastage.



### SPECIFICATIONS:

- Functional Pressure Range: 550-750 Kpa
- Max Airflow: 159 cfm LS-15 / 415 cfm LS-25
- Controller Weight: 2.5kg
- Controller Dimensions: 275mm(L) x 275mm(W) x 90mm(D) (Includes fittings)
- Sensor Weight: 2.2kg
- Sensor Dimensions: 50mm(Ø) x 750mm (Includes suspension hook)

### OPTIONS:

- Universal Mount Bracket

## **SV-STRAINER TRAINER**

This SV-Strainer Trainer is designed to assist in keeping pump pick-up strainers free from clogging by intermittently purging the strainer box with a short burst of either air or liquid (purge medium).

- Robust
- Quick Install
- Automated





U1/ 5-7 Boeing Place - Caboolture - QLD 4510 - Australia

**+61 456 000 665 / info@solidsvac.com**

[www.solidsvac.com](http://www.solidsvac.com)